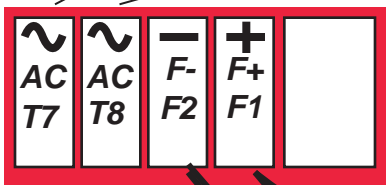
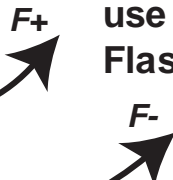


The AC Input of the regulator is from 190 to 277 Volts

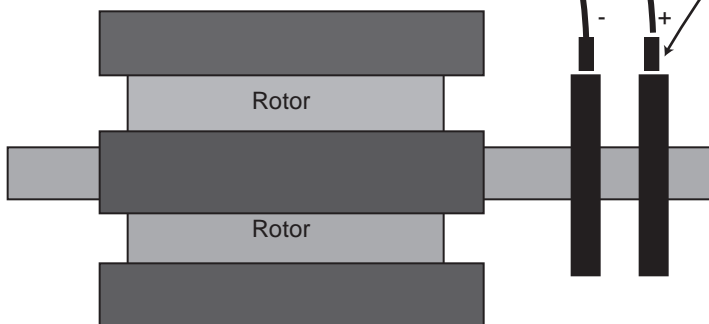


If you need Flashing use SS500 Automatic Flashing Module



If it does not work the first time Swap the wires going to the slip rings. It can be Connected wrong

The Voltage Regulator needs from 5 to 6 Volts residual Voltage to work. If you don't have residual you have to flash the Generator



Slip rings on Generator

Caution
High Voltage will kill you
If you don't know what you are doing. Call someone That can help you.
1-800 541-7677