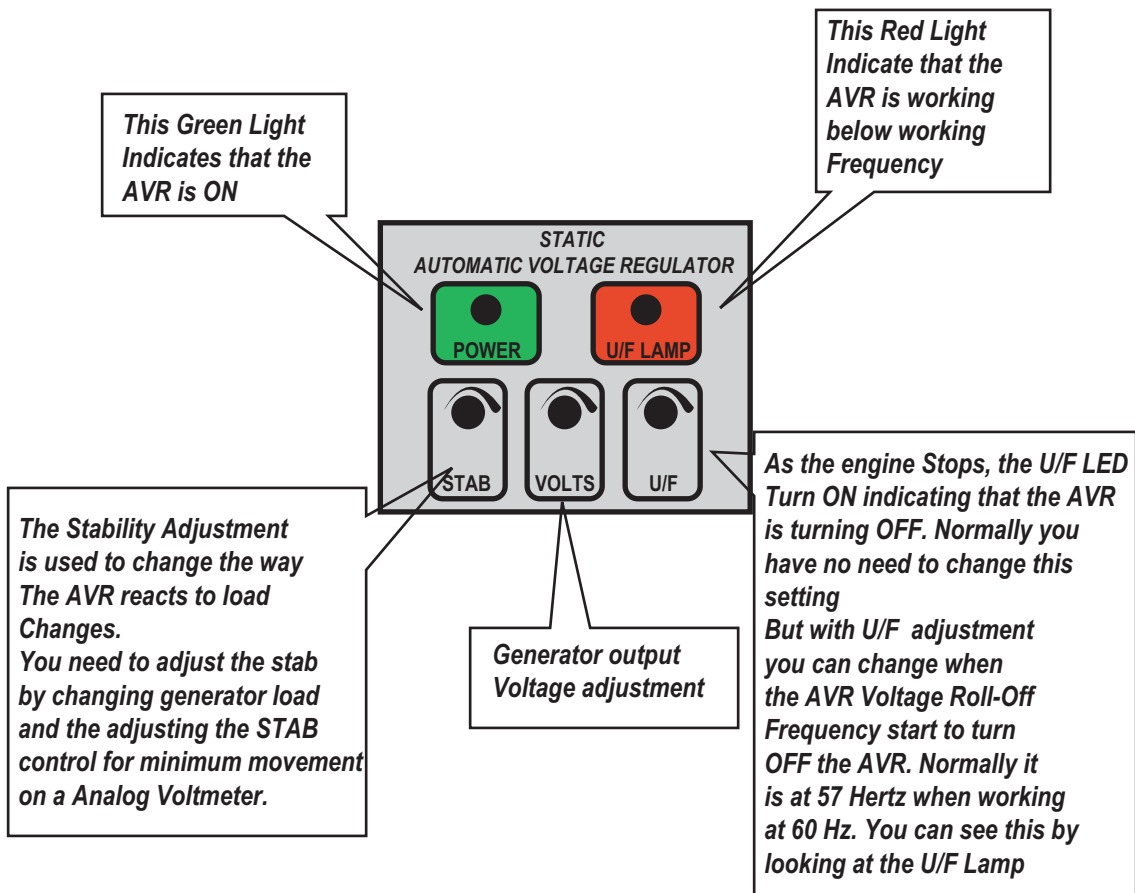


# Basic Instructions On The Static AVR's



*The Static Voltage Regulator usually works the first time with no problems after installation. But after 25 years of experience I like to tell you about the most common problem I had.*

**1. - The customer says that the output voltage of the generator is only 1/2 of normal. Specially if the generator is wired to work at 480 Volts output. The problem here is that the INPUT sensing wires of the AVR is not INSTALLED un the First STAR, but on the output power lines. SOLUTION install them on the FIRST START 240v input Max.**

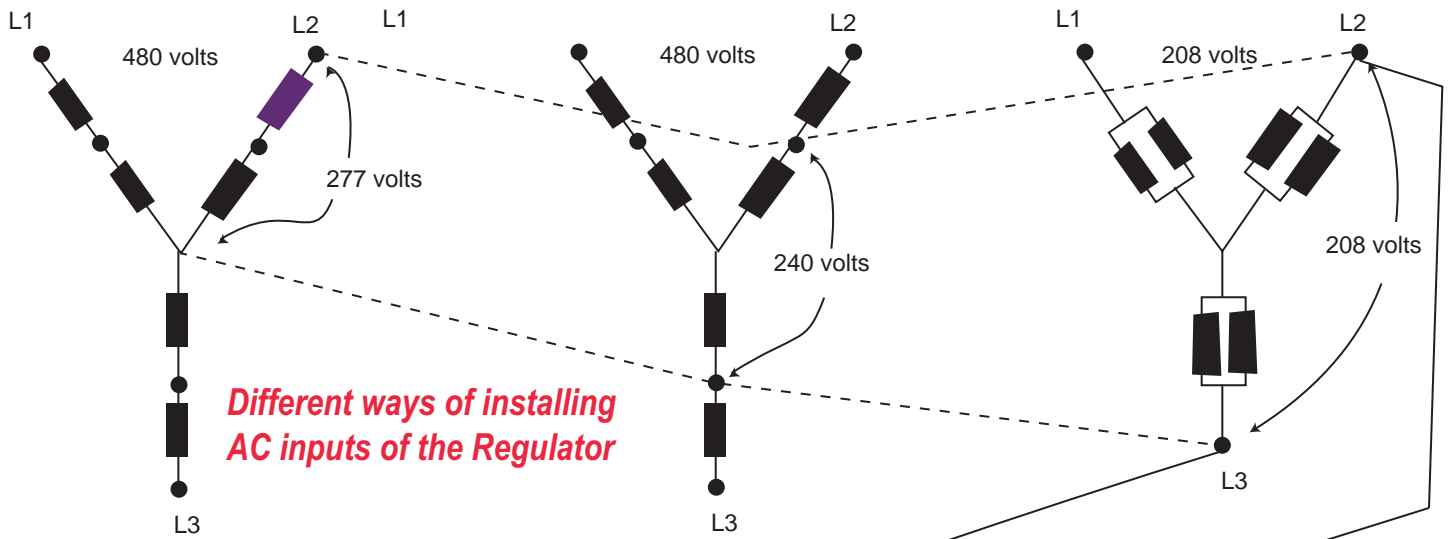
**2. - The customer says that he has no power at all coming out of the generator . The SOLUTION is to REVERSE the wires F+ F- on the slip rings.**

**3. - Another problem is that the generator has no residual voltage to start the build-up process. SOLUTION FLASH the Generator.**

**4. - If you need help call Willy at 1-800-541-7677. We can work it out on the phone.**



Changing the U/F set point by removing the jumper in the controller. ON for 60 OFF for 50Hz. You can also add a 1K Ohm 1/2 wire resistor for remote voltage adjustment.



The AC Input of the regulator is from 190 to 277 Volts



If you need Flashing use SS500 Automatic Flashing Module

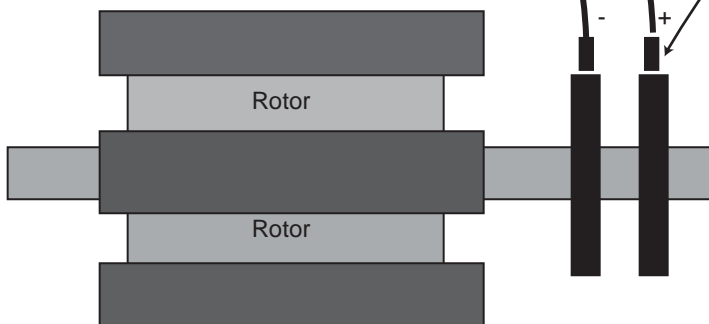
F+

F-

*If it does not work the first time Swap the wires going to the slip rings. It can be Connected wrong*

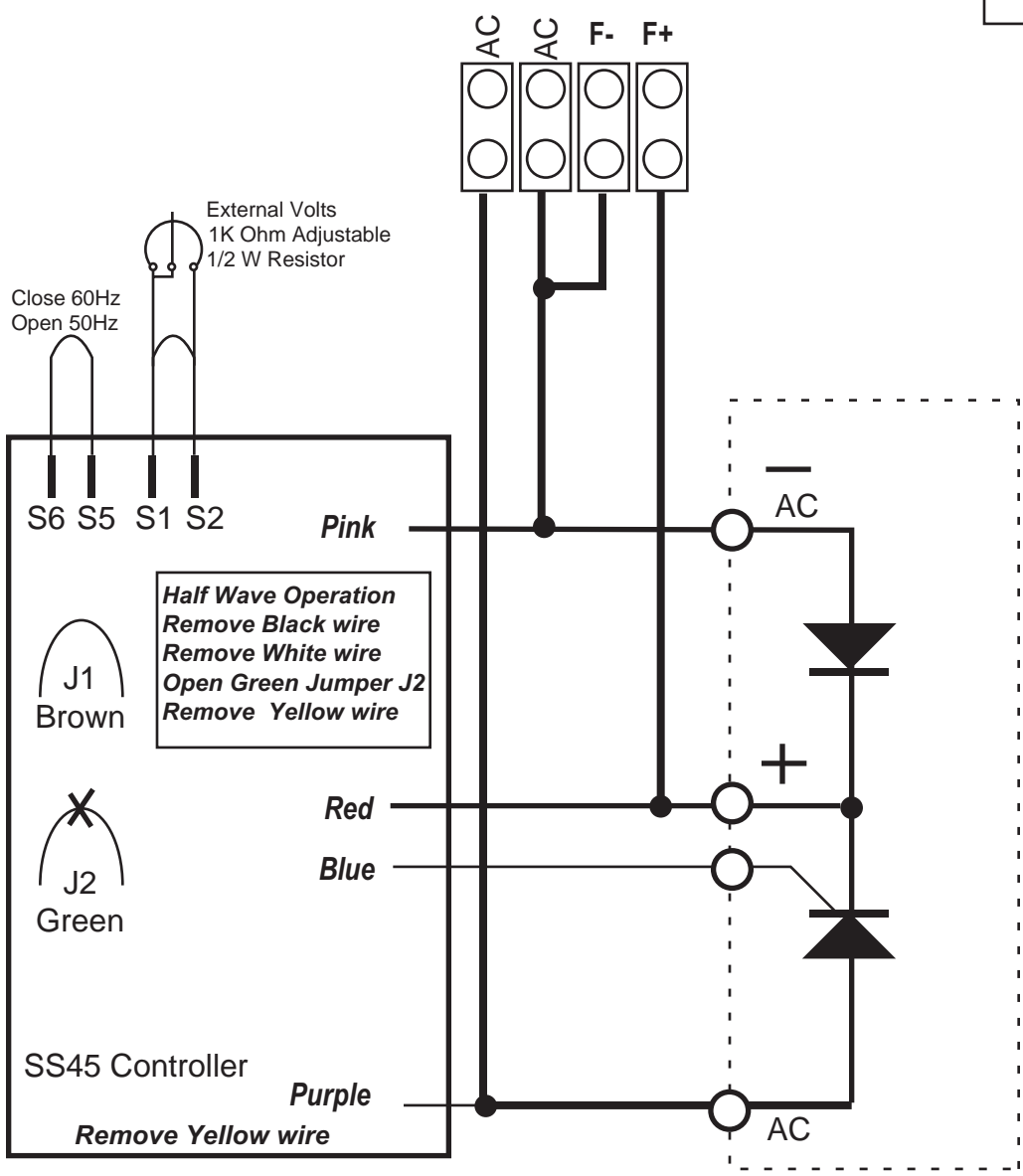
The Voltage Regulator needs from 5 to 6 Volts residual Voltage to work. If you don't have residual you have to flash the Generator

Slip rings on Generator



**Caution**  
High Voltage will kill you  
If you don't know what you are doing. Call someone That can help you.  
1-800 541-7677

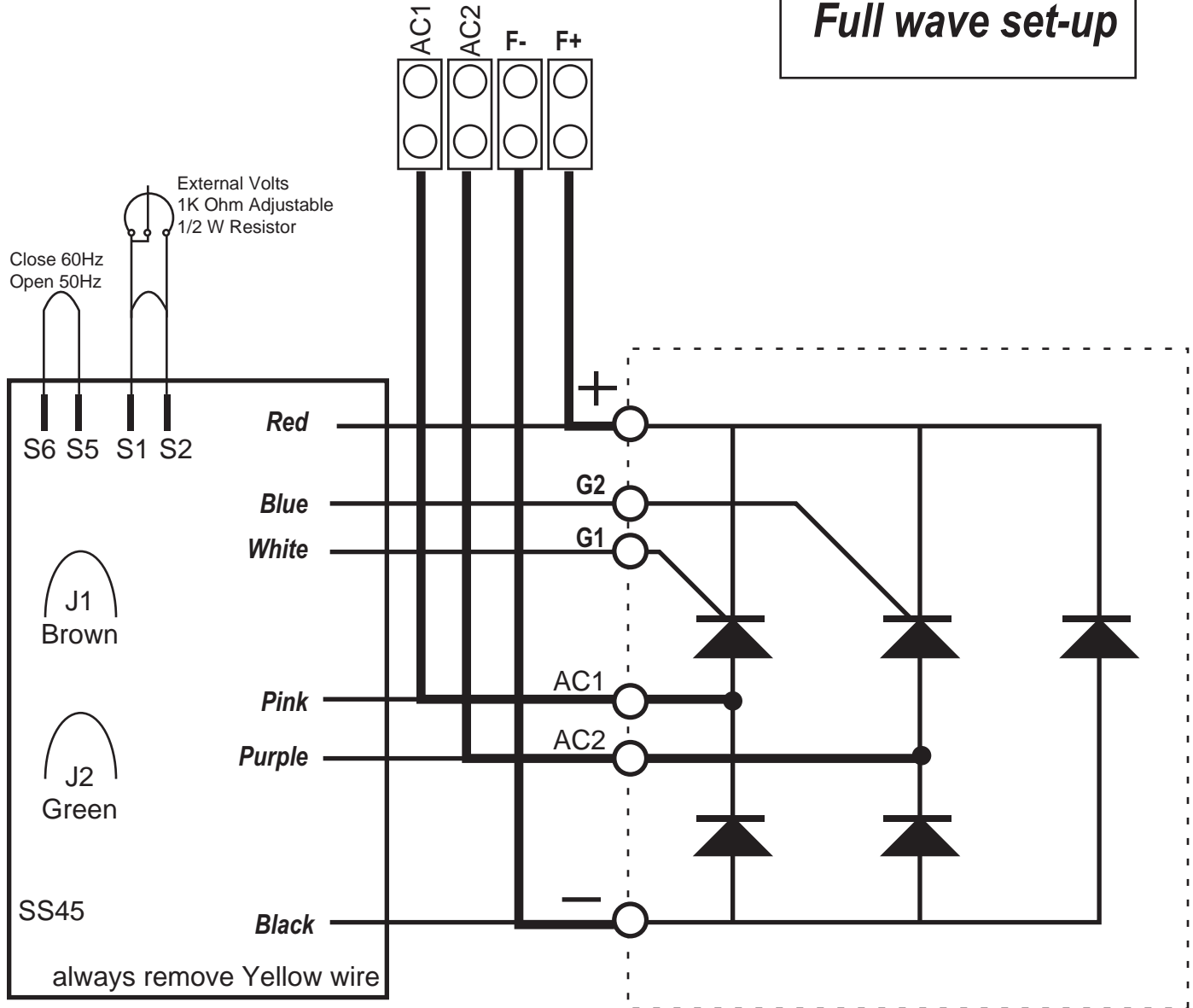
# 1/2 wave setup



J1 Cut and remove Brown wire to disable Low Freq. Roll-Off  
 J2 Cut and remove Green wire for Half Wave Operation

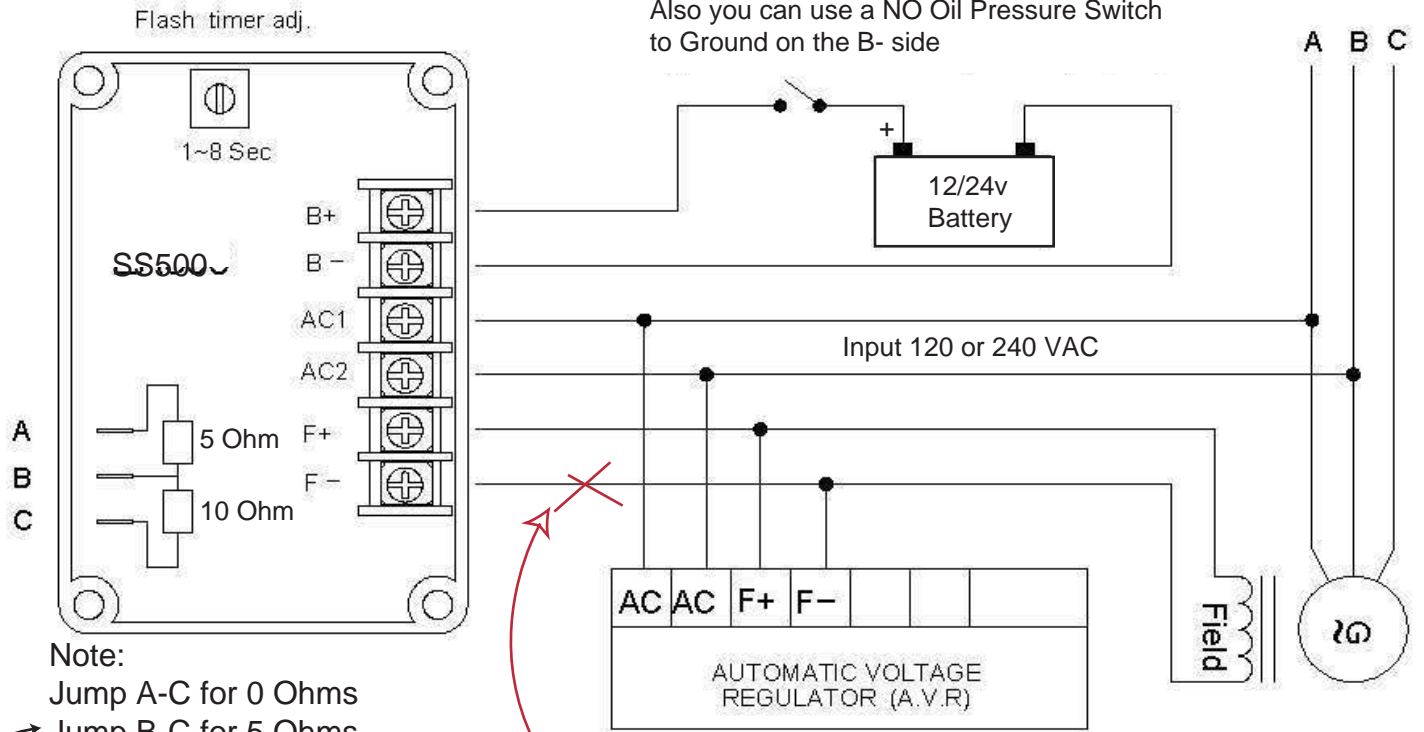
The Model SS45 Controller can work in both 1/2 wave and full wave units. Use the proper combination of Diodes and SCR for each system

# Full wave set-up



***Cut and remove Brown wire on SS45 if you need to disable U/F Under frequency Roll-Off***

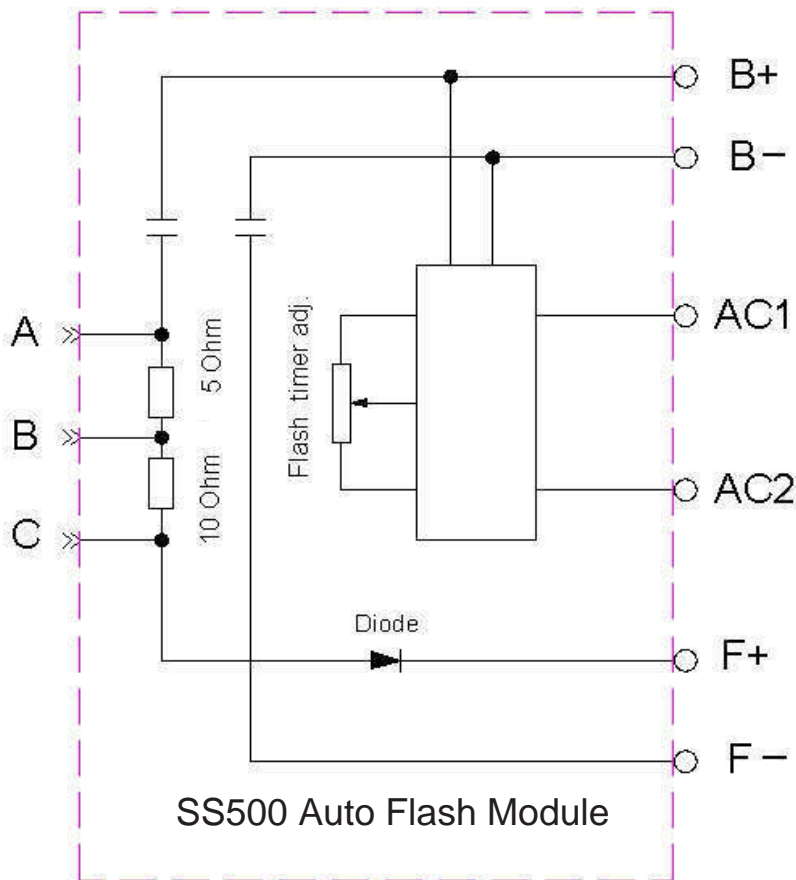
Oil Pressure/Fuel Switch (Normally Open).  
Also you can use a NO Oil Pressure Switch  
to Ground on the B- side



Note:  
Jump A-C for 0 Ohms  
Jump B-C for 5 Ohms  
Jump A-B for 10 Ohms

Use 10 Ohm Setting First

Do not Connect F- from AVR to Flashing unit  
If Generator NEUTRAL is Ground to  
Generator Chassis and to Battery - at the same time



## SS500 AUTO FLASH MODULE

Automatic Voltage  
Build-up Relay

Input :

B+, B- 10~30Vdc  
AC1, AC2 120/240Vac  
AC1, AC2 120/240Vac

Flash timer adj. 1~8 Sec