

BTS3BE0600 BTS4BE0600
 BTS3BE0800 BTS4BE0800
MCCB Type Transfer Switch

Rated Current 500~800A Voltage 100~600VAC

Features

- High Short Circuit Breaking Capacity
- Incorporate OCPD* Design
- Complies with IEC60947-6 requirements**
- MCCB Has Auxiliary Limit Switch Inside
- Reliable Motor-Operated Transfer Mechanism
- Molded Insulating Manual Handle
- PVC-Coated Bus Bar > 3KV Insulation
- With Mechanical Interlock
- Includes Plug-in Connector, For Simple Hook-up to Controller

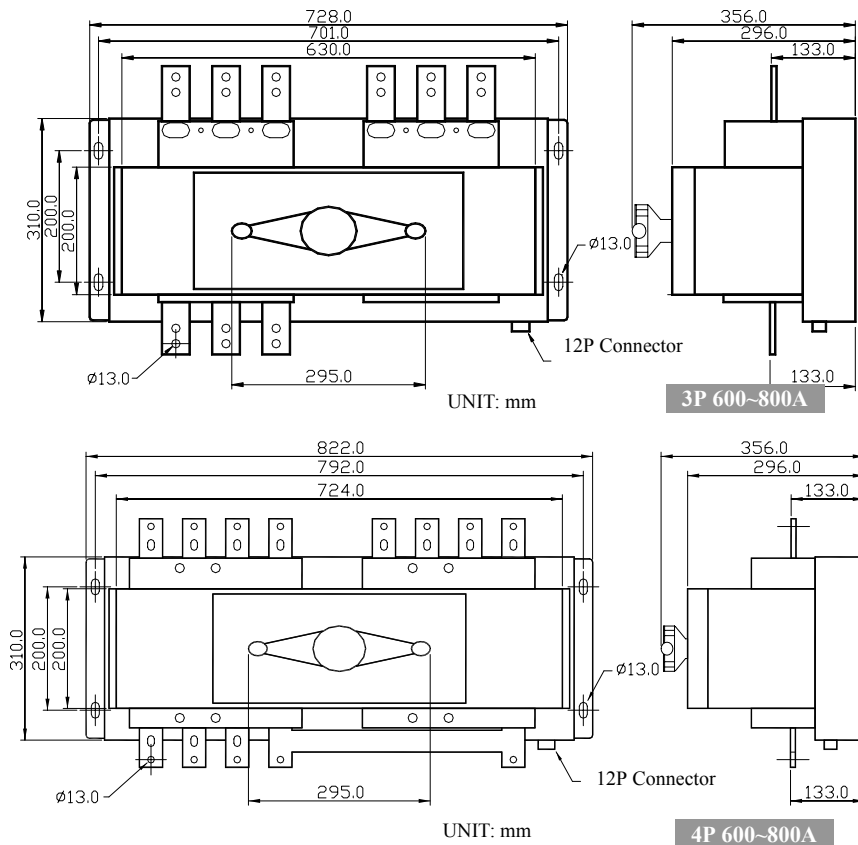


BTS Rated Operating Current & AC Rated Breaking Capacity

BTS Type	Pole	Rated Current(A) Ambient Temperature 40		AC Rated Breaking Capacity					
				Sym r.m.s.(KA)		IEC 60947-2 Icu/Ics			
				240V	380V	415V	440V	500V	690V
BTS3BE600	3P	500	600	35	25	25	20	18	-
BTS4BE600	4P	500	600	50	45	35	30	25	16
BTS3BE800	3P	700	800	50	45	35	30	25	16
BTS4BE800	4P	700	800	85	65	50	50	35	20

*For special high breaking capacity requirements, please contact us.

Mechanical Specifications



***OCPD**
 Over Current Protection Device

****IEC60947-6 Class CB**
 ATS provided with overcurrent trip and the main contacts of which are capable of making and are intended for breaking short circuit currents.

****IEC60947-6 Utilization Category AC-33A**

1. Frequent operations.
2. Motor loads or mixed loads including motors, resistive loads and up to 30% incandescent lamp.

***Customized BTS Available**
 Please provide the required specification and specified MCCB type (if there is any), we will evaluate the mechanical capability for customers.

Please link to <http://www.mcphersoncontrols.com> for detailed manual.